

## ■ Monitoring of Natural Gas and Biogas Pipeline Networks and Plants ■

2  
0  
2  
3



# GAZOSURVEY™

iOS and Android mobile application  
for network monitoring and gas leak recording

- Universal mapping solution with data collection and recording
- Bluetooth communication with GAZOMAT™ detectors
- Compatible with an enterprise data management solution
- Suitable for pedestrian and other mobility solutions

**GAZOSURVEY™** is a mobile software application designed to monitor natural gas/biogas networks and facilities providing automated methane leak data logging. Running on iOS and Android operating systems, the field survey solution is available from App Store or Play Store. Its purpose is to make survey data collection from mobile devices fast, easy and to enable enterprise data sharing and collaboration.

In addition to ensuring regulatory compliance, monitoring traceability allows for quick response from the repair teams.

**GAZOSURVEY : What It is**

The application allows a mobile device to connect to a GAZOMAT detector via Bluetooth. It is then very easy to conduct inspections from a smartphone/tablet, using all the device's functionalities (GPS, keyboard/voice-to-text, email, SMS, camera,) to collect and transfer data fast and accurately.

**As easy as 1,2,3**

- Inspections assigned to field operator displayed in a dashboard with scheduled completion deadline and status. Removal of completed surveys is automatic, thus avoiding any duplication
- Real-time visualization and navigation in Google Maps or OpenStreetMap powered by ESRI (under licence)
- Geoposition recording at regular intervals, coupled with detector's Serial Nr., PPM reading, date, time...

**Full control at your fingertips**

- App settings fully configurable, at any time: language, map type (Google Maps/OpenStreetMap), auto-logging interval, alarms, etc.
- Detector's functional testing (results automatically recorded)
- Survey details filled in via the survey information page
- Event note entry and hot spot picture taking and storage
- Maximum reading (MAX) automatically logged

**Interface with a web-platform**

- Automated transfer of survey data to NGMesh platform

**GAZOSURVEY ENTERPRISE interfacing with NGMesh web platform – How It Works**

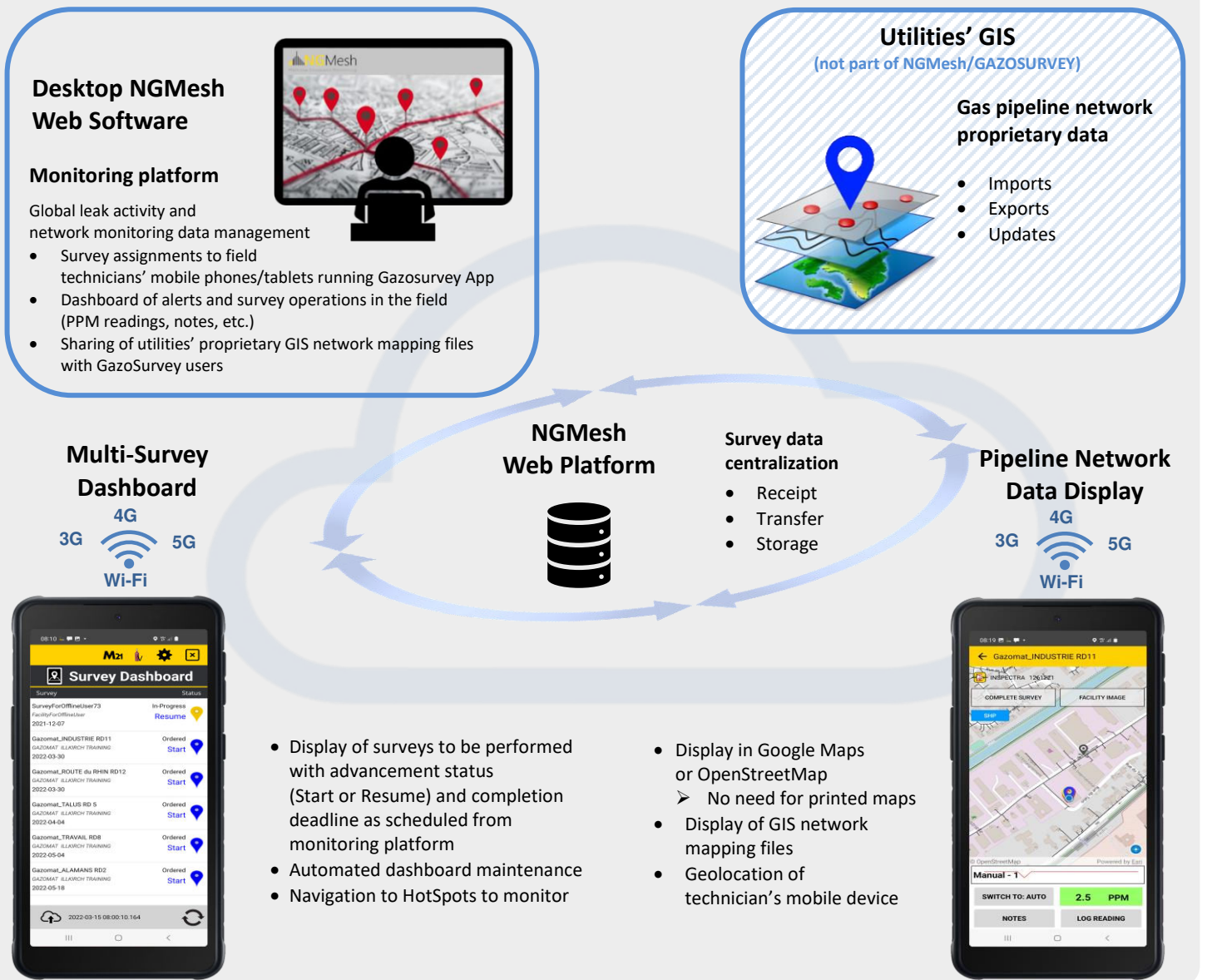


## GAZOSURVEY™ BASIC Version

(AVAILABLE SOON)



## GAZOSURVEY™ ENTERPRISE Version - Interfacing with NGMesh Web Platform



GAZOSURVEY Application Features	BASIC version (available soon)	ENTERPRISE version NGMesh Platform interface
• One Licence per user	Single licence	Multiple licence pack
• Downloading from App Store (iOS OS) or Play Store ((Android OS)	✓	✓
<b>Start-up &amp; configurable Settings</b>		
• Wireless Bluetooth connection to GAZOMAT detectors via their serial number	✓	✓
• Survey dashboard for survey selection and start up	Single survey dashboard	Multi-survey dashboard
• Auto-logging intervals of smart device's geolocation (1/2/4/5/10/20/30s)	✓	✓
• Reading recording	✓	✓
• Multilingual - Chinese, Czech, English, French, German, Italian, Portuguese, Romanian, Spanish...	✓	✓
• Alarms	✓	✓
<b>Mapping</b>		
• Compatible with mapping platform: Google Maps	✓	✓
• Compatible with mapping platform: OpenStreetMap powered by ESRI		✓
• Display of geoposition	✓	✓
• Full screen map view - Two-finger scroll for Zooming/Dezooming, centering and shifting map on screen	✓	✓
• Synchronisation of NGMesh platform with customer existing GIS system (subject to compatibility)		✓
• Display of gas network mapping files. Required file format: <ul style="list-style-type: none"> <li>○ SHAPE format compatible with OpenStreetMap</li> <li>○ KML format compatible with Google Maps</li> </ul>		✓ ✓ ✓
<b>Traceability</b>		
• Leak events coupled with mobile device geolocation, PPM reading, user name, detector's Serial Number, notes entered and HotSpot pictures	✓	✓
• Detector's functional tests with tests reports automatically transferred to NGMesh platform. Verification process using: <ul style="list-style-type: none"> <li>○ Either one methane concentration value</li> <li>○ Or several methane concentration values (Method21 valid for INSPECTRA detectors only and in the USA exclusively)</li> </ul>		✓
• Reference gas concentration value modifiable		✓
<b>Data transmission and access</b>		
• Survey data transmission to email address (detector's serial number, date and time, Geolocation, PPM reading, notes)	✓	
• Survey data recording and storage on NGMesh web platform		✓
• Output data compatible with Excel tool for processing and further analysis	✓	✓
• Data export		✓

GAZOSURVEY™ – Technical Requirements		
Mobile software application compatible with	iOS operating system	Android operating system
Mobile device version (smartphone or tablet)	iOS 11 and newer	8.0.0 and newer
Recommended minimum screen size	4 inches or 11.9 cm	4 inches or 11.9 cm
Optimum screen size	6.1 inches or 15.4 cm	6.1 inches or 15.4 cm
RAM of Smartphone/Tablet	5 Go or greater	5 Go or greater
Storage	64 Go or greater	64 Go or greater
SIM card required	4G minimum	4G minimum
Data pack	Approx. 100 Mo/day	Approx. 100 Mo/day
Licence	In-app purchases/Corporate	In-app purchases/Corporate
Automatic software update notifications	Via App Store / Corporate	Via Play Store / Corporate